

# PsiXpda MANUAL v1

---

- 1 Declaration
- 2 Care and safe use of your PsiXpda
- 3 Quickstart
  - 3.1 Opening and closing the PsiXpda
  - 3.2 Turning the PsiXpda on and off
  - 3.3 Extracting the stylus
  - 3.4 Before first use
- 4 Physical Layout
  - 4.1 Top
  - 4.2 Front
  - 4.3 Rear
  - 4.4 Right
  - 4.5 Left
  - 4.6 Bottom
- 5 Conventions
- 6 Basic features & use
  - 6.1 Screen
  - 6.2 Touchpad, touchscreen & stylus
  - 6.3 Battery, AC power, and charging
  - 6.4 Sound system
  - 6.5 microSD drive
  - 6.6 Keyboard
- 7 Intel USB Client
  - 7.1 The first time you connect
    - 7.1.1 Installing Intel's support software
    - 7.1.2 Managing the connection
- 8 3G Dial-Up Networking
  - 8.1 Inserting the SIM card
  - 8.2 Creating a Dial-Up Networking connection
  - 8.3 Using a Dial-Up Networking connection
  - 8.4 Removing the SIM card
- 9 Bluetooth & Wi-Fi
  - 9.1 Wi-Fi
  - 9.2 Bluetooth
- 10 SMS
  - 10.1 Using Mobile Partner to send and receive SMS texts
    - 10.1.1 Starting Mobile Partner
    - 10.1.2 Sending a text
    - 10.1.3 Receiving a text
- 11 Appendices
  - 11.1 Keyboard symbols
    - 11.1.1 PsiXpda symbols
    - 11.1.2 Extended keyboard symbols
  - 11.2 UK Mobile Service Provider 3G details
  - 11.3 Support for installed applications
- 12 Frequently Asked Questions
  - 12.1 Windows
    - 12.1.1 How do I right-click with the stylus?

- 13 Troubleshooting
  - 13.1 General
    - 13.1.1 The power button does not activate the PsiXpda
    - 13.1.2 The touch pad doesn't work
    - 13.1.3 The microphone doesn't work, or is too quiet
    - 13.1.4 No sound
    - 13.1.5 When I rotate the screen, the touchscreen puts the pointer in the wrong place
    - 13.1.6 There is no picture, or the picture quality is poor, from the built-in camera
    - 13.1.7 The keyboard doesn't work
    - 13.1.8 A window is too large for the screen
    - 13.1.9 I can't see all the buttons in a window
  - 13.2 Windows
    - 13.2.1 Intel USB Client
      - 13.2.1.1 'Connection could not be verified'
    - 13.2.2 I don't see any network indicators in the system tray
  - 13.3 Disaster recovery (Windows)
- 14 Glossary
  - 14.1 Terms
  - 14.2 Icons

## Declaration

---

Please read this user manual carefully before using your new computer. PsiXpda will only honour warranty claims for defects arising from manufacturing faults, and not for disassembly, abnormal operation, or data loss arising from abnormal operation.

This manual will be updated regularly, and you are urged to check the website for the latest version. The contents herein are for reference only, and PsiX PDA take no responsibility for errors or omissions within. All images are for illustrative purposes only, and may differ from final production items, or final software setup.

PsiX PDA reserves the exclusive publication rights for this manual. It is forbidden to reproduce this manual without the express consent of PsiX PDA.

## Care and safe use of your PsiXpda

---

Your PsiXpda is a piece of precision electronic equipment, and as such, requires a degree of care.

- If cleaning is necessary, use only a dry cloth or a mild detergent solution. Do not use polishing or scouring agents, or alcohol or solvents, as this may damage the finish.
- If the unit is dropped or immersed in liquid, turn it off, and take it to an approved maintenance agent for inspection.
- In case of damage, there is a risk of data loss. If possible, and safe, backup any data as soon as possible.
- Keep your PsiXpda away from :
  - Extreme heat or cold, ie, higher than 35°C or lower than 5°C. If moving the unit from high to low temperature (or vice versa), allow it time to adjust to the new temperature to reduce the risk of condensation.
  - Direct, bright, sunlight
  - Dusty environments
  - High humidity or rain
  - Excessive vibration or impact
  - Strong magnetic or electric fields

- Do not cover the fan exhausts (see the Physical Layout section). Do not use your PsiXpda on a soft surface such as a carpet or blanket, as this will not provide adequate ventilation.
- The base of the PsiXpda can become warm to the touch - this is normal.
- Strong high-frequency electromagnetic radiation may interfere with Wi-Fi, Bluetooth and mobile/3G signals. In this case, move your PsiXpda away from the source of the radiation to improve performance.
  
- Shield the screen from direct sunlight.
- Protect the screen from impacts, and pointed objects.
- When used in extremely low temperature, residual ghosting may occur on the screen. This is not a fault, and normal operation will resume when the screen is returned to normal room temperature.
- Do not use anything other than the provided stylus with the touchscreen.
  
- Only use the provided AC adaptor to charge your PsiXpda.
- When unplugging the adaptor, do not pull the cable.
- When charging, connect the adaptor first to your PsiXpda, and then to the wall socket.
- If the AC adaptor cable is visibly damaged, replace it with a new one.
- Remove the power cable before cleaning the unit.
  - Do not attempt to disassemble the battery.
  - Do not expose the battery to fire or extreme temperatures (i.e., greater than 60°C).
  - Do not expose the battery to water or other liquids.
  - Do not short-circuit the battery.
  - Keep the battery away from children.
  - Dispose of the battery safely and responsibly.
- Cold environments may reduce the life of the battery.
- The battery may require more time to charge in cold environments. Ideally, charge in an environment between 10°C and 30°C.
- Before storing your PsiXpda for a long time, remove the battery and store it separately.
- If the battery holds only a reduced charge after being fully charged, it may need replacing.
  
- Do not touch the camera lens - it may become scratched, resulting in poorer image quality.
- Do not point the camera into direct sunlight.
- Use only a dry or damp cloth to clean the camera lens.

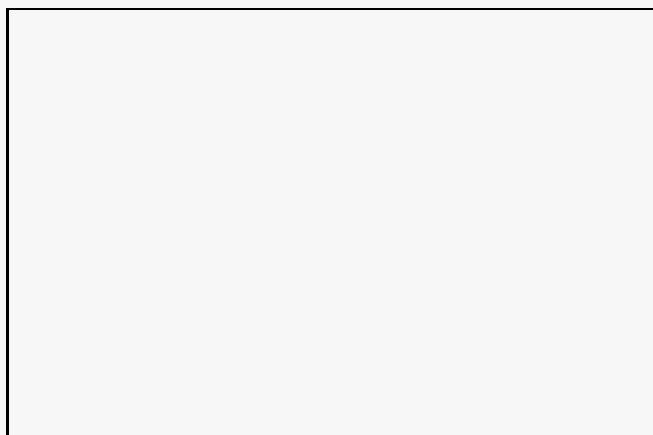
## Quickstart

---

### Opening and closing the PsiXpda

---

1. While holding the base of the unit, slide the screen away from you by applying gentle force to both sides at the same time...





2. ... until it stops.



3. Now lift the screen towards you...



4. ... until it stops at about 80°





To close the PsiXpda, reverse the previous instructions : Push the screen down, and then slide it closed.

## Turning the PsiXpda on and off

---

The on/off switch is on the rear of the unit.

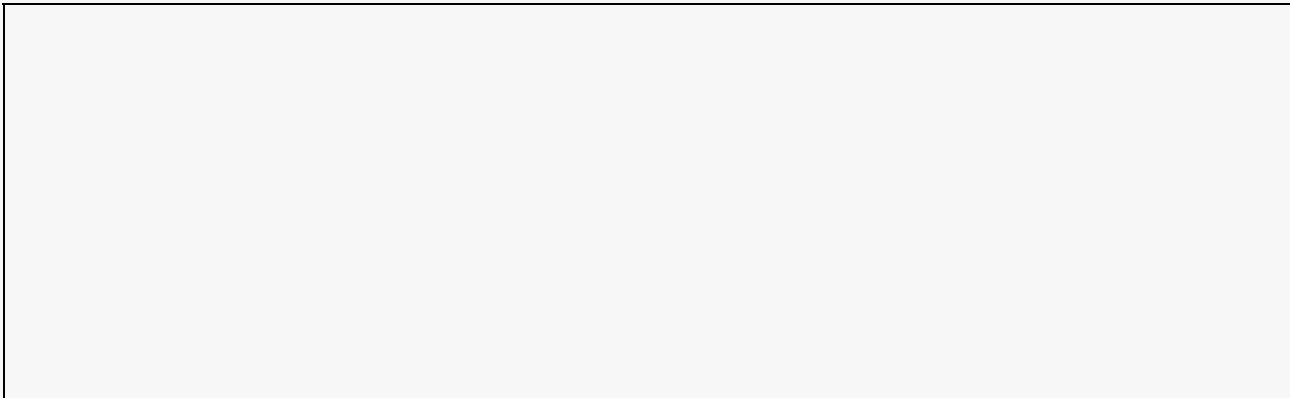


The battery provided with your new PsiXpda may not be fully charged. Before use, please connect your PsiXpda to AC power, and allow the battery to charge. See the section 'Battery, AC power, and charging' for more details.

## Extracting the stylus

---

The stylus is concealed within the near-left corner. Use a fingernail to extract the handle, and then remove the stylus from the compartment.



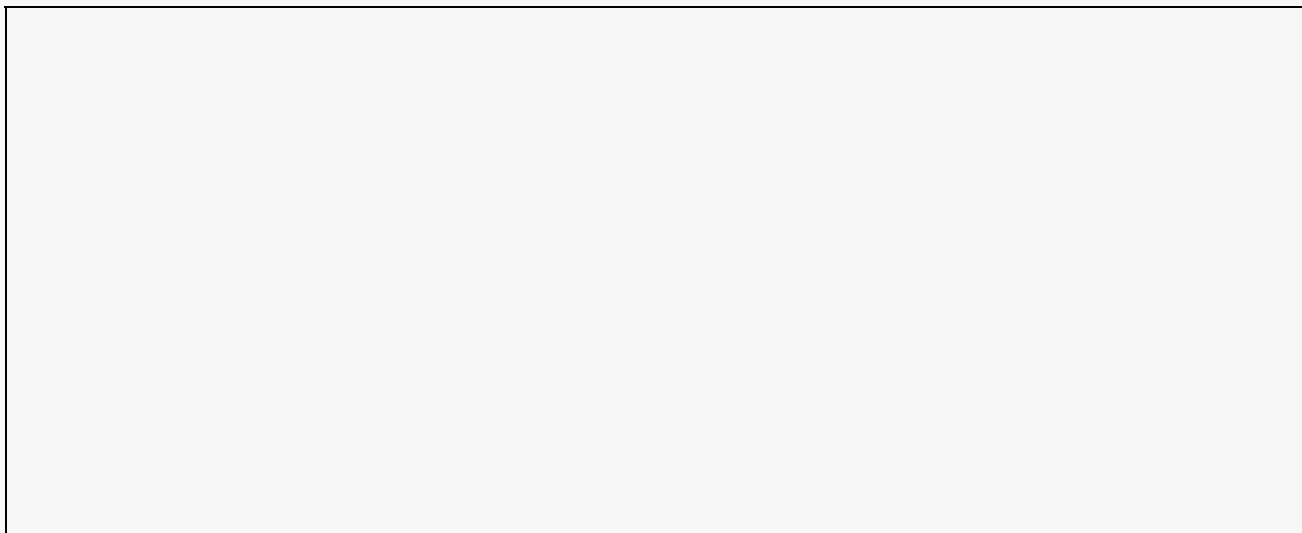


## Before first use

In order to get the best performance from your battery, we recommend you charge the battery completely before use. You can, however, use your PsiXpda while it is charging.

## Physical Layout

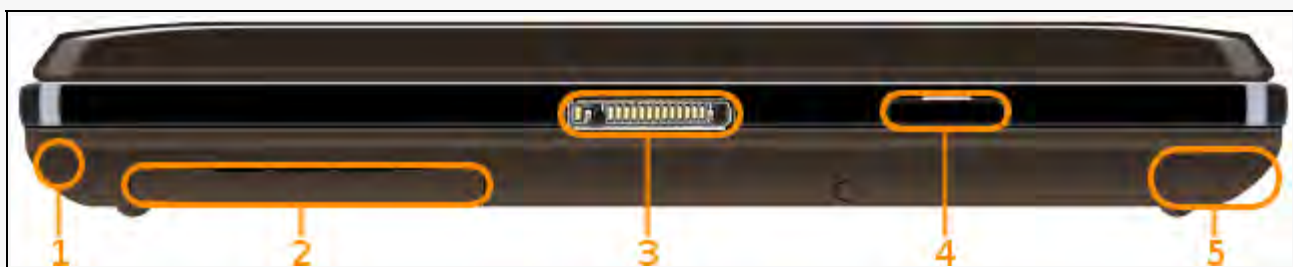
### Top





1. Hard disc activity LED
2. 3G activity LED
3. WiFi activity LED
4. Power LED
5. Battery LED
6. Caps Lock indicator
7. Screen brightness buttons
8. Touchpad
9. Left & right mouse buttons
10. Video camera

## Front



1. Stylus
2. 3G modem & SIM card compartment
3. Docking port
4. microSD drive (shown with the drive door open)
5. Battery compartment

## Rear



1. DC in
2. 2.5mm headset jack
3. Screen on/off switch
4. Power switch
5. CPU fan exhaust
6. USB Type A socket

## Right



1. Microphone
2. Battery cover

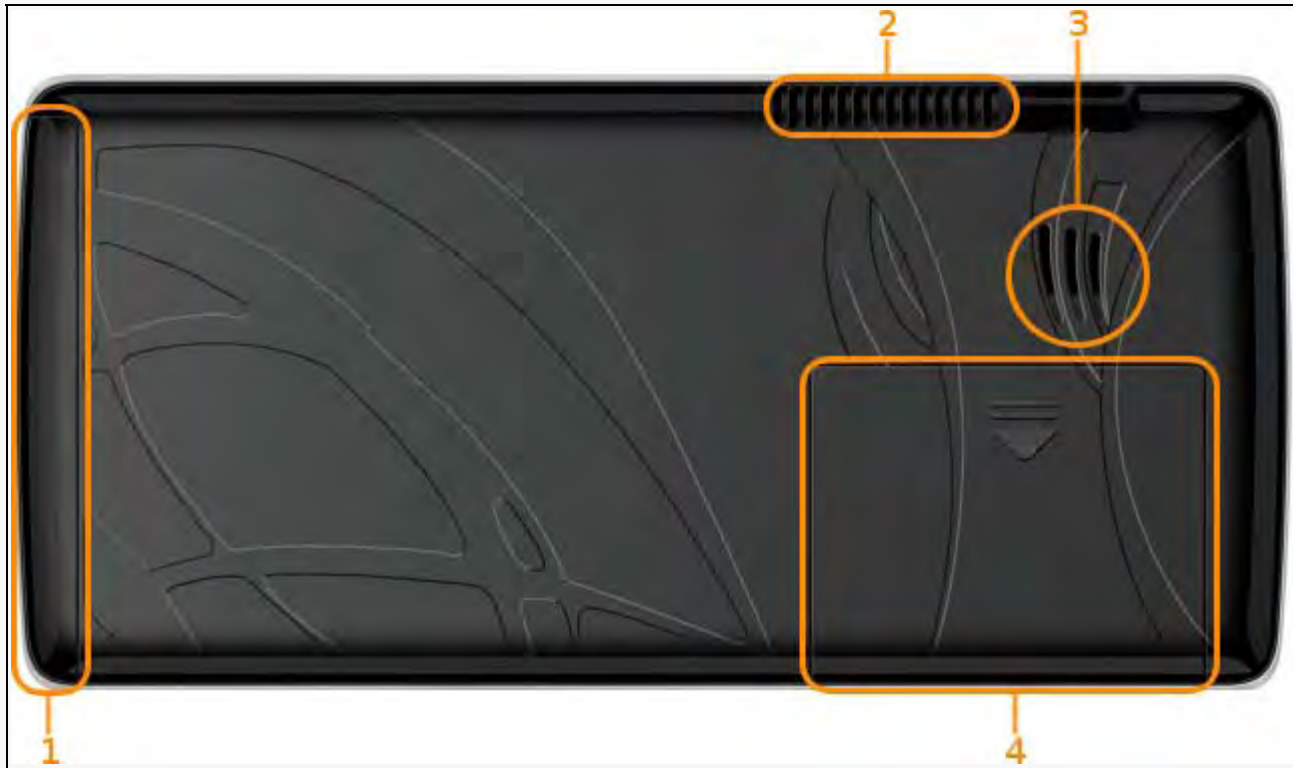
## Left





1. USB Type A Mini socket
2. Stylus

## Bottom



1. Battery compartment
2. CPU fan exhaust
3. Internal speaker
4. 3G modem & SIM card compartment

## Conventions

Throughout this manual, in order to clarify the text, we'll be using different typefaces in different situations.

When instructed to press a key, or combination of keys - *x*, eg

To activate the 3G subsystem, press **Fn-G**. When referring to an 'Fn' key, first press and hold the Fn key (bottom-left of keyboard), then press and release the letter key, and then release the Fn key.

When referring to a message in a window or a message box - **message**, eg

A window will appear, saying **Are you sure you wish to continue?**.

When referring to a section of a window - **Password**, eg

Confirm or correct the details in the **User setup** box.

When instructed to click a button - **Next**, eg

If everything is correct, click **OK**

Typically, this will be a single left-click, unless otherwise specified. The various clicks and how to achieve them are covered in [the touchpad and touchscreen section](#).

Running applications from the Start Menu will be displayed as **Start Menu**, eg

Run the eGalax touchscreen software by either double-clicking on the icon on the desktop, or via **Start > Programs > eGalax**.

## Basic features & use

### Screen

You can use the two brightness buttons in the top-right corner of the PsiXpda to vary the screen brightness...



...or **Fn-Y** (brighter) and **Fn-U** (darker). The Fn-keys provide finer control, and a wider range, of brightness.



In order to save power, if you are not using your PsiXpda for a brief period, you can switch the screen off. You can do this either pressing both brightness buttons simultaneously, or by using the screen button at the **rear** of the unit. Repeating this will turn the screen back on.

To protect the screen, place your PsiXpda in its bag after use. If the screen is dirty, use a soft cloth to wipe it clean. Do not spray cleaning agent directly onto the screen.

If your operating system supports it, you can rotate the orientation of the screen by using Ctrl-Alt-(Arrow key). The following table describes how to achieve this, but essentially, the direction of the arrow describes the direction of the top of the desktop.

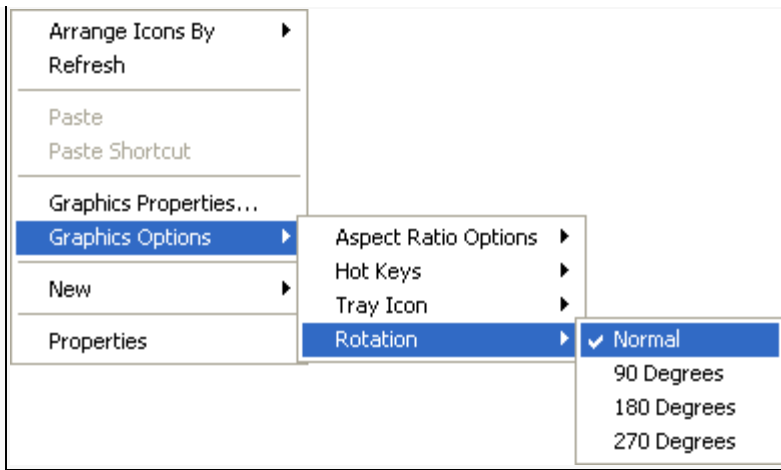
Key combination	Effect
Ctrl-Alt-Fn ◀	Portrait; Top of the desktop is to the left.
Ctrl-Alt-Fn ▲	Landscape; Top of the desktop is up. Normal.
Ctrl-Alt-Fn	Portrait; Top of the desktop is to the right.
Ctrl-Alt-Fn ▼	Landscape; Top of desktop is down. 'Upside down'.

Under Windows, you can also rotate the screen using the desktop background menu (right-click on the desktop background),

or the graphics drivers tray icon (  ) : Select **Graphics options > Rotation**. The options presented are *anti-*

*clockwise*.





Desktop menu



Tray icon menu

## Touchpad, touchscreen & stylus

There are two ways of controlling the mouse pointer built-in to the PsiXpda. The first is the touchpad, which sits to the right of the screen. By moving your finger or thumb gently across the touchpad, the onscreen mouse pointer will move in the same direction as your finger. To replace the mouse buttons, you can use the two buttons to the left of the screen.



The second is by using the stylus. When using the stylus, the onscreen pointer will follow the *position* of the stylus tip when it is pressed against the screen. Mouse-clicking can be performed either with the buttons mentioned above, or by tapping the screen.

If you're using the touchpad and mouse buttons,

'click' or 'left-click'

Move the mouse pointer to the desired point, and press the left mouse button, or lightly tap the touchpad.

'right-click'

Move the mouse pointer to the desired point, and press the right mouse button.

'double-click'

Move the mouse pointer to the desired point, and press the left mouse button twice in rapid succession.

'drag'

Press and hold one of the buttons (usually the left mouse button, or top PsiXpda button), and move the pointer to the destination.

'hover'

Move the mouse pointer over an icon, and wait. Usually a tooltip (small window containing explanatory text) will appear.

If you're using the touchscreen and stylus,

'click' or 'left-click'

A single tap on the screen with the stylus at the desired position

'right-click'

Tap-and-hold the stylus for a few seconds.

'double-click'

Tap twice in rapid succession.

'drag'


Press the stylus to the screen, and, while continuing to press, move the stylus to the destination.

'hover'

It's not possible to hover with the stylus.

## Battery, AC power, and charging

The PsiXpda has its own internal battery which it will use for power in the absence of AC, and it will charge this automatically whenever connected to an AC power supply via the supplied adaptor. Once the battery is fully charged, the PsiXpda will stop charging. You should charge the battery whenever...

- the capacity falls below 10% (as shown in Windows by the battery status icon (  ) which appears in the system tray whenever the PsiXpda is running on battery power),
- the screen dims noticeably,
- the battery has been removed from the PsiXpda, and unused for some time.

To charge the PsiXpda, simply connect it to mains power with the supplied AC adaptor, and switch the mains on. If the PsiXpda is off, it will charge fully in approximately 5 hours. If it's being used at the same time, the time taken will be longer.



Windows will issue two warnings (via visible and/or audible alerts) when the battery level is falling worryingly low. The first indicates that there is approximately 10-15 minutes remaining (**but this will vary according to how heavily you are using the unit**). The second indicates that there is only 1-2 minutes remaining. In order to avoid data-loss, we strongly recommend that you take steps to avoid complete power loss by either connecting to mains power, or by saving your data and turning the PsiXpda off, when the first low-battery-level warning appears.

If you fully charge the battery, but the battery status indicator doesn't reach 100%, or near 100%, then it may be time to replace the battery with a new one.

The battery will discharge over time whether or not it is installed in the PsiXpda, and whether or not it is being used. This is normal, and a characteristic of this type of battery. We recommend that you fully charge your battery at least once a month.

If you put your PsiXpda into storage, or don't use it for a long time, remove the battery and store it separately to reduce the risk of leakage.

The following table describes the various conditions of the Power and Battery LEDs, with respect to the state of the PsiXpda, and mains (or AC) power.

		Meaning
Off	Off	PsiXpda is off, not connected to mains power

Off	Flashing	PsiXpda is off, battery is charging
Off	On	PsiXpda is off, battery is fully charged
On	Off	PsiXpda is on, running on battery
On	Flashing	PsiXpda is on, running on AC, battery is charging
On	On	PsiXpda is on, running on AC, battery is fully charged

## Sound system

---

Your PsiXpda has a built-in speaker (in the base), which will operate unless you have external speakers/headphones/earphones plugged in.

You can control the volume either through your operating system, or by using **Fn-I** to increase the volume, **Fn-O** to decrease the volume, or **Fn-P** to toggle the speaker on and off.

## microSD drive

---

On the front panel of your PsiXpda, there is a microSD drive that can accept any capacity microSD cards.

To insert a microSD card :

- Open the microSD drive door by gently pulling the tab at the left (the door is hinged on the right).
- Insert a microSD card. If the PsiXpda is screen-up, then the golden contacts should be facing the floor, and the notch should be to the right.
- Push the card in until you hear a click.
- Close the drive door.

To remove a microSD card :

- Open the drive door as above.
- Push the card further into the drive until you hear a click. The card will spring out, ready to be removed.
- Close the drive door.

## Keyboard

---

The PsiXpda features a backlit keyboard which can aid use in darkness or low-light conditions. To activate the backlight, press **Fn-Q**, and **Fn-Q** again to deactivate it.

## Intel USB Client

---

The Intel USB Client allows you to connect your PsiXpda to another computer via a USB cable, and have that cable act as a network connection. This means that you can then share files, and communicate with your PsiXpda, just as if it were on your network.

This is useful in cases where there is no Wi-Fi network available, or you require a faster network connection - the USB ports can transfer data at up to 480Mb/s.

The application also includes a management utility that will automatically map the network drives as soon as the PsiXpda is

connected.

For the purposes of this section, 'host' refers to the desktop or laptop (or other PsiXpda), to which you will be connecting your PsiXpda.


## The first time you connect

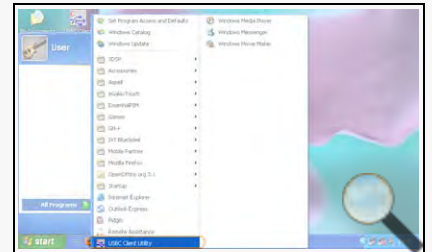
Before you can connect your PsiXpda to a host, you will need to install Intel's software that supports the connection.

You will need

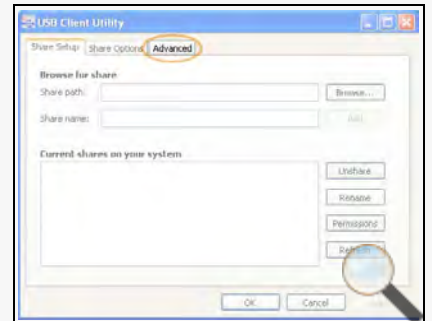
- A USB cable that can link your host computer to either of the PsiXpda USB ports.
- A shared folder configured on your PsiXpda (and/or host). File-sharing and networking are beyond the scope of this document, and we recommend you consult [Microsoft](#) , or ask [Google](#).

## Installing Intel's support software

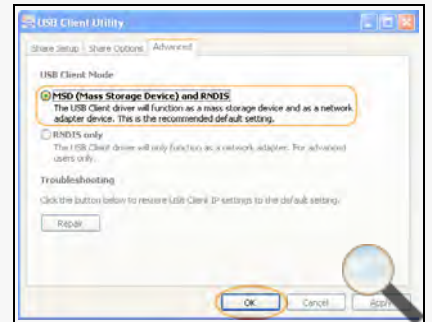
1. On the PsiXpda, double-click on the **USBC Client Utility** icon (  ), or use the Start Menu.



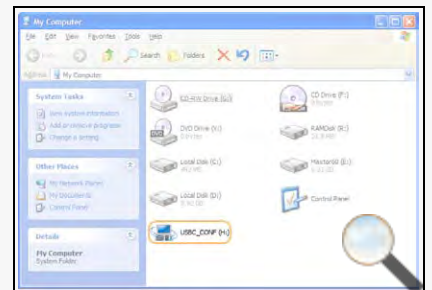
2. Once the program has loaded, click on the *Advanced* tab.



3. You'll now be presented with two choices under the heading 'USB Client Mode'. Select *MSD (Mass Storage Device) and RNDIS* and then click *OK*.



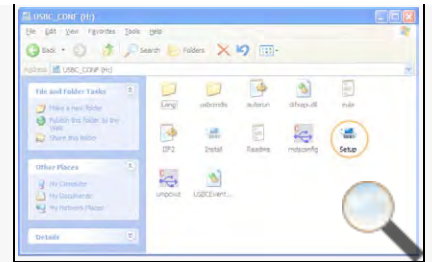
4. Connect the host and the PsiXpda with your USB cable.
5. On the host, double-click on *My Computer*. You should see a new device, entitled *USBC\_CONF*. In the example picture here, it has been allocated the letter H, but that is largely unimportant, and yours may be different. Double-click on this *USBC\_CONF*.



6. You'll now see a selection of files. Double click on *Setup* to start the installation

proper.

7. You've now started installing Intel's USB Client Host Utility. Click *Next*.



8. Read and understand the license agreement. If you decline this agreement, click *No* and the installation will terminate. Click *Yes* to continue.



9. These are release notes detailing what has changed since previous versions of the software. You may safely ignore this. Click *Next*.



10. You're now asked if you want to install the management utilities. These utilities allow you to change how the PsiXpda appears in the host's 'My Computer', and automatically open the shared folder upon connection. You may change the folder to which they are installed, but it is safe to leave it at the default suggestion. Select *Install the utility* (it should already be selected), and then click *Next*.



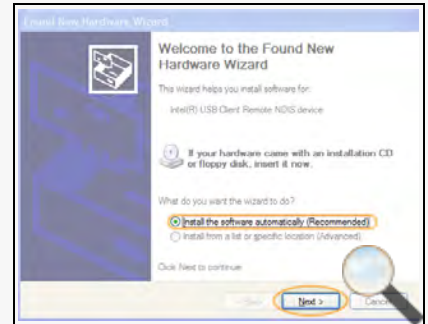
11. (This window may not appear, depending on which version of the software is shipped with your PsiXpda. If it doesn't, don't worry, just go to the next step.)



You might now be presented with a warning window stating that the software you are installing has not passed Windows Logo testing and might cause problems with your computer. In this particular case, the warning is groundless, and you may safely continue. Click *Continue Anyway*. More information on Windows Logo testing is available at <http://www.microsoft.com/whdc/winlogo/default.msp>.



12. Click *Install the software automatically (Recommended)*, and then click *Next*.



13. Wait while Windows installs the drivers...

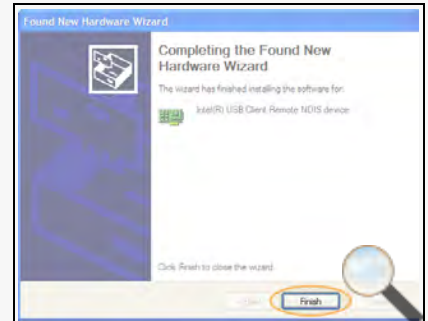


14. (This window may not appear, depending on which version of the software is shipped with your PsiXpda. If it doesn't, don't worry, just go to the next step.)

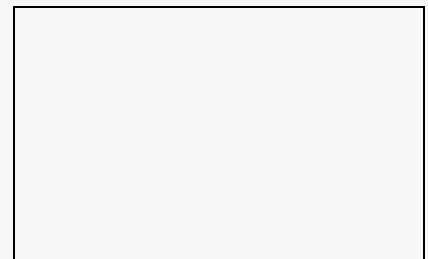
As before, this warning is safe to ignore. Click *Continue Anyway*.



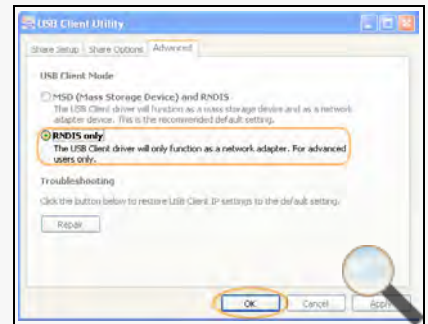
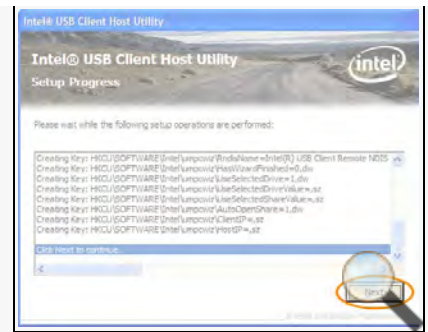
15. Almost done now. Click *Finish*.



16. Click *Next*.







17. Click *Finish*. The installation of the Client Host Utility is all done! Tea all round, I think.

18. Finally, on your PsiXpda, follow step 2 again (and 1, if the utility is not running), but this time, select *RNDIS only*, and click *OK*. If you omit or forget this step, you will run into trouble when managing the connection.

19. On the host, the management utility will automatically start now. See the next section for details on how to use it.

This host can now be used to connect to your PsiXpda. In order to start using the connection, you must now tell the host how to interpret the incoming connection from your PsiXpda.

## Managing the connection

As before, 'host' refers to your desktop or laptop.

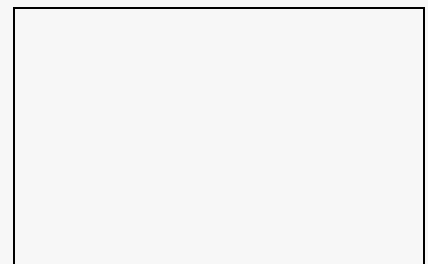
Before proceeding, ensure that your PsiXpda's USB Client Utility is operating in *RNDIS* mode. See the penultimate step of [the previous section](#).

On the host,

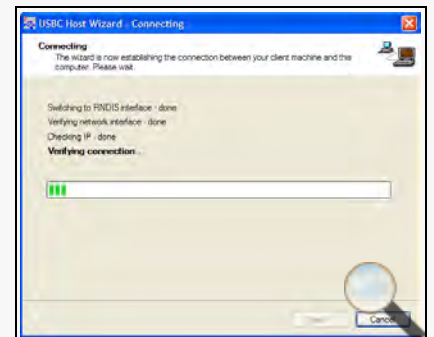
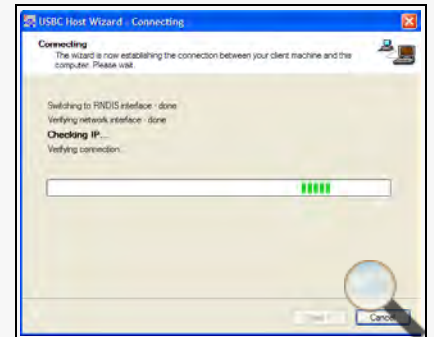
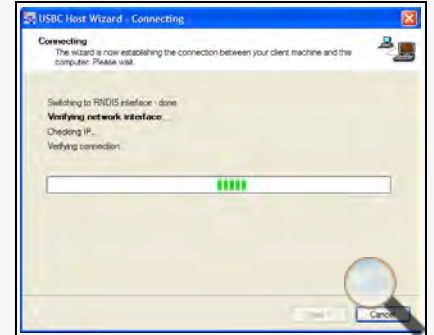
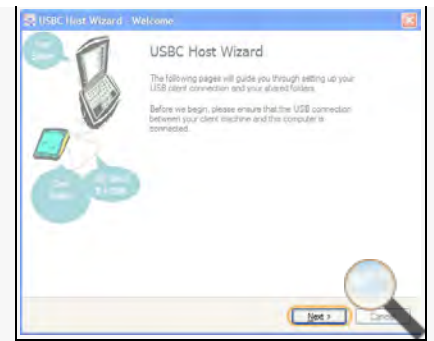
1. If the application is not already running (ie, from the last step in the previous section) double-click on 'USBC Host



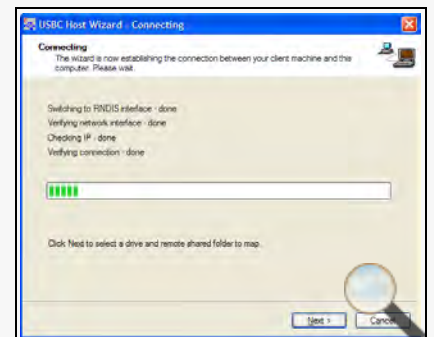
2. Click *Next*.



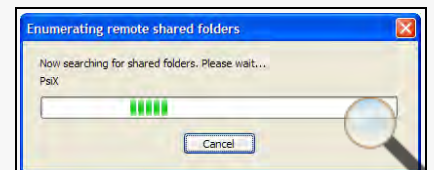
3. The USBC Host Utility will now examine the connection, and attempt to connect to the PsiXpda.



4. Click *Next*.



5. It will now communicate with the PsiXpda and detect any shared folders configured thereon.



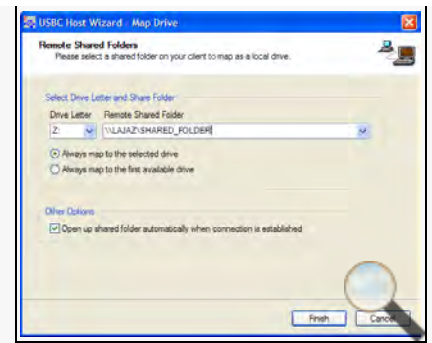
6. This last window allows you to configure how the PsiXpda's shared folders appears in the host's *My Computer*.

In the section 'Select Drive Letter and Share Folder', you can choose which drive letter represents the PsiXpda.

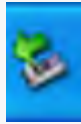
Which drive you choose is entirely up to you. Drives that are unavailable (ie, are part of the host computer, or are already mapped) will be unselectable from the menu. If you are unsure, select *Always map to the first available drive*.

The section labelled 'Other Options' does exactly what it suggests. When the host computer detects that your PsiXpda has connected successfully, it will automatically map the drives, and open a new folder window. It's probably a good idea to tick this box.

7. Finally, a new Explorer window will pop open (assuming you ticked the box in the last step), showing the shared files on your PsiXpda.



Note: Always use the 'Remove hardware safely'



icon in the system tray to disconnect before shutting down the

PsiXpda.

## 3G Dial-Up Networking

Before beginning, you will require

- A 3G account with a mobile service provider, and corresponding to this account,
- A miniature (25mm x 15mm x 0.76mm) SIM card.
- A username and password (either or both of which might be blank).
- An APN, or Access Point Name.
- An access number (commonly \*99# in the UK).

We have compiled a list of these data for some of the common UK mobile service providers in the appendices.

## Inserting the SIM card

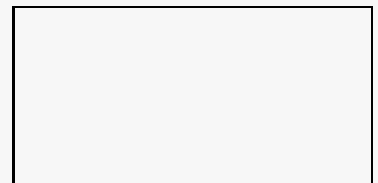
1. Turn the unit over, and remove the cover of the modem by sliding it in the direction shown.



2. Locate the slot (shown here with a SIM already inserted).



3. Insert the SIM card as shown. With the unit upside-down (with the keyboard facing the floor), the SIM's golden chip will be facing down, and the notch should be in the far-left corner. Push the SIM into the slot until you hear a quiet click.





4. Replace the cover of the modem.

## Creating a Dial-Up Networking connection

You will only need to complete this process once for each separate 3G connection you want to use.

1. Ensure the 3G system is enabled, and, if necessary, enable it by pressing **Fn-G**.

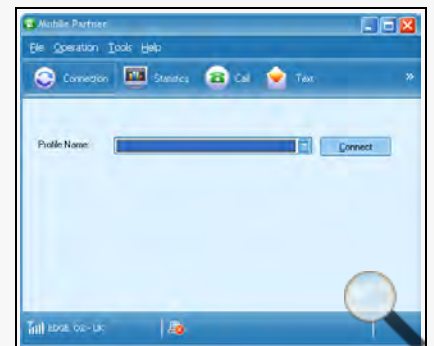


2. Double-click on the Mobile Partner shortcut (  ) on the desktop, or use the Start Menu (**Start Menu >**

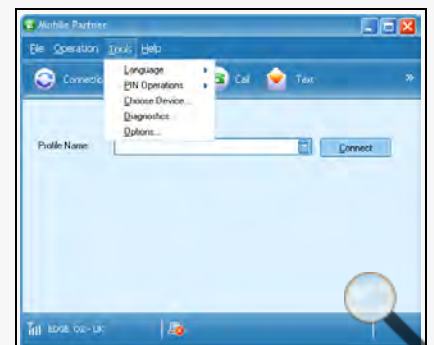
Mobile Partner

**All Programs > Mobile Partner > Mobile Partner**).

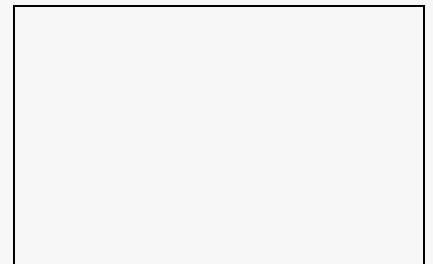
3. You'll now be presented with Mobile Partner's front page. The Profile menu will be blank if this is the first connection to be created. Click on the **Tools** menu.



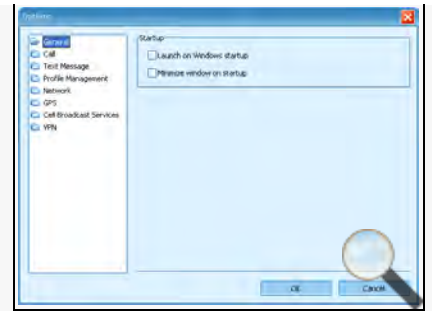
4. ... and then click on **Options...**



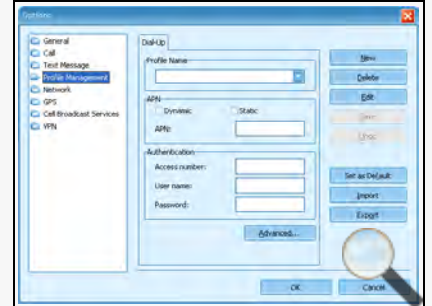
5. This is Mobile Partner's main options screen. Click on **Profile Management**.



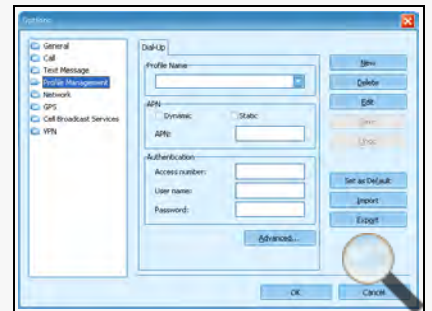
6. Now you can enter the relevant details that will allow you to connect to the 3G service of your choice. In order to do that - and save these settings so you don't have to enter them each time - you'll be creating a profile. Click on **New**.



7. In **Profile Name**, enter a name that clearly represents the service provider. In **APN**, either click **Static** and enter the Access Point Name, or leave the box blank and click **Dynamic**. In **Authentication**, enter the Access number, username and password given to you by your service provider. Finally, when you're happy that everything is entered correctly (don't worry, you can always **Edit** these details later), click **Save**.



8. Finally, click **OK** to get out of the Options window.

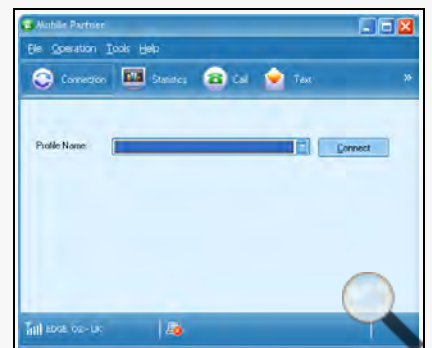


That's the profile created, and it's now ready to use. It will appear in your 'Network Connections' window, the **Connect To** menu in the Start Menu, and in the list of available connections in Mobile Partner.

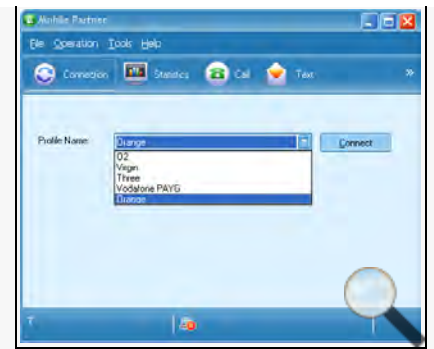


## Using a Dial-Up Networking connection

1. If Mobile Partner is still running, click on the **Connection** icon, or start it as described in the first step of the previous section.



2. Using the drop-down menu, choose the service you wish to connect, and then click **Connect**.



3. Mobile Partner will now dial, connect, and authenticate with your chosen network. Once connected, a network icon will appear in your system tray, displaying the speed of the connection.
4. When you're ready to disconnect, simply click on the **Disconnect** button.

## Removing the SIM card

1. Remove modem cover, as in step 1 of 'Inserting the SIM card'.
2. Locate slot containing SIM, as in step 2 of 'Inserting the SIM card'.
3. Push the SIM in further. You'll hear a click, and the SIM will spring out, ready to be removed.


## Bluetooth & Wi-Fi


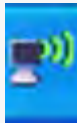
When not in use, to reduce power consumption, disable the Wi-Fi & Bluetooth systems.

To enable/disable the Bluetooth & Wi-Fi, press **Fn-W**.



### Wi-Fi

First, ensure that the Wi-Fi system has been enabled. Look in the system tray, and if you see either  (offline; no

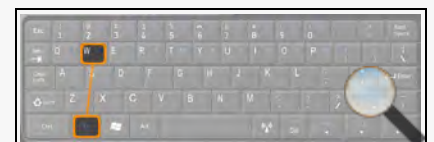
wireless network connection),  (connecting; searching for, or connecting to, a wireless network), or  (online;

connected to a wireless network), then the system is enabled.

Before you begin, you will need :

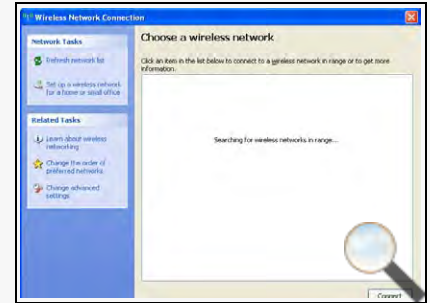
- A wireless network broadcasting on the 802.11b or 802.11g standard, and a clear signal from that network.
- A WEP key or a WPA key - similar to a password - if the network has been secured. You might need to consult your wireless router or network administrator in order to obtain this.

1. If necessary, enable the Wi-Fi (and Bluetooth) system by pressing **Fn-W**. After a few seconds, you should hear a couple of chimes, and the icons for BlueW and the wireless network status indicator will appear in the system tray.

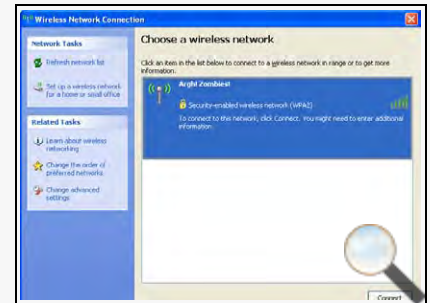


2. Double-click on the wireless network icon (  or  ).

3. Windows will now search for wireless networks within range.

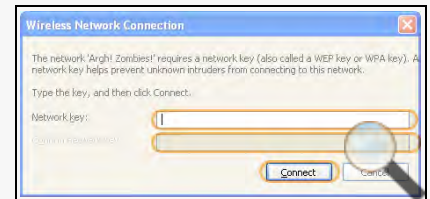


4. If any wireless networks have been detected, you'll now see a list of them. In this example, there is only one within range, called 'Argh! Zombies!'. Double-click on the network you wish to connect to.

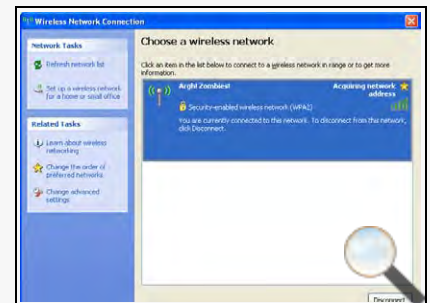


5. (You will only see this stage if the network you are attempting to connect to requires a key).



Now you will be prompted to enter the security key that allows you to access the network. Enter it in both boxes, and then click *Connect*.

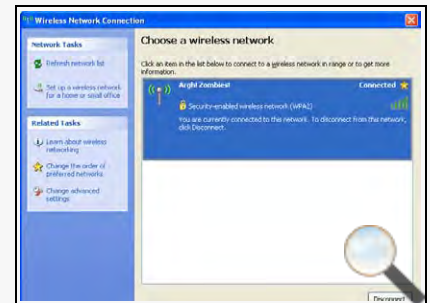


6. If you entered the key correctly, Windows will now connect to the network...




7. ... connected! The wireless network status indicator in the system tray will now

change to  and then to  .



## Bluetooth

The PsiXpda Bluetooth subsystem is controlled by an application called BlueSoleil (  ). In order to use any Bluetooth peripheral (such as a headset, printer, keyboard, etc), you will need to have BlueSoleil running.

As mentioned in the previous section, the Bluetooth subsystem is disabled to save power. Refer to the [instructions](#) in the

section **Bluetooth & Wi-Fi** to see how to tell whether it is enabled, and how to enable and disable it.

Due to the vast range of different types of Bluetooth peripherals and devices, this guide will only give a demonstration of using one particular device - a hands-free earpiece. The principles described herein will extend to other devices. Bluetooth devices must first be 'paired' with each other - effectively, introduced. Once paired, they can be connected and actively used.

Before you begin, you will need :

- A Bluetooth device of some kind. No, really.
- The passkey necessary to use that device - if it has one.

You will only need to complete this process for each new Bluetooth device. Once it has been paired with your PsiXpda, BlueSoleil will remember it.

1. First check to see if BlueSoleil is already running. Look in the system tray for



or

.

If not, start BlueSoleil either by double-clicking on the

shortcut on your desktop (  ), or by using the start menu.

BlueSoleil

2. (This screen will only appear the first time you run BlueSoleil)

A window will appear, prompting you to make the initial configuration. The section labelled *General* asks you to describe this Bluetooth device. The first box contains the name under which your PsiXpda will announce itself to any Bluetooth networks. This needs to be distinctive enough to identify your own PsiXpda amongst other devices.

The second box describes the rôle of the device. Set this to *Laptop*.

For the section entitled *Security*, leave the box labelled *Use security level Medium* ticked. You will be able to reconfigure this later.

Click *OK*.

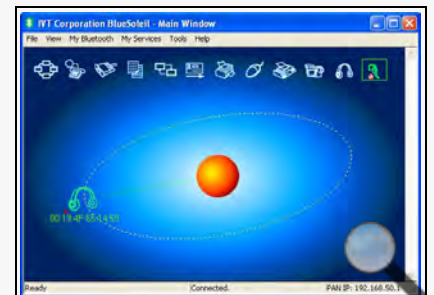
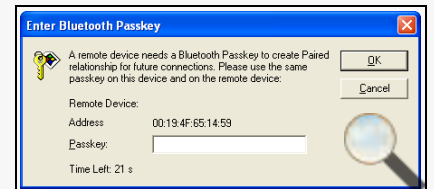
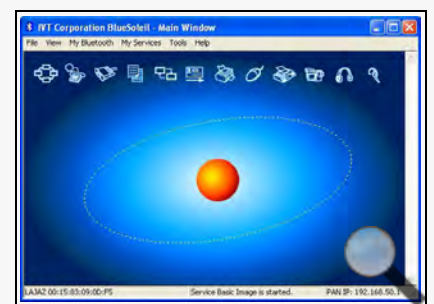
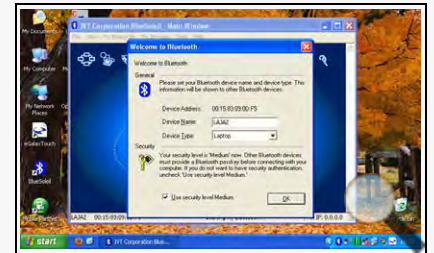
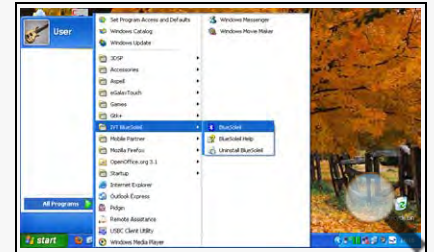
3. Now you'll see the main window of BlueSoleil. Along the top of the window are the various types of Bluetooth service that are supported. The large orange globe in the centre is your PsiXpda, and, when you've connected a device (as we're about to), you'll see devices orbiting this globe, indicating that they're connected.

4. Ensure your Bluetooth device is switched on.

5. (You will only see this window if your Bluetooth devices requires you to enter a passkey in order to connect)

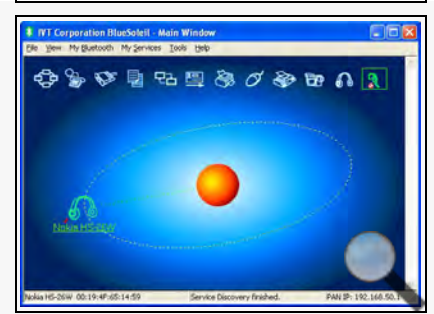
You now have 30 seconds to enter the passkey. Type it into the box, and either press return or click *OK*.


6. Now BlueSoleil will communicate with your device to find out what it is. At the moment, it's known only by its unique [MAC address](#)...






7. ... until the discovery process is complete, and the device name and appropriate symbol appear in orbit around your PsiXpda. Your PsiXpda and your bluetooth device have now been **paired**. That is, they will now remember each other.

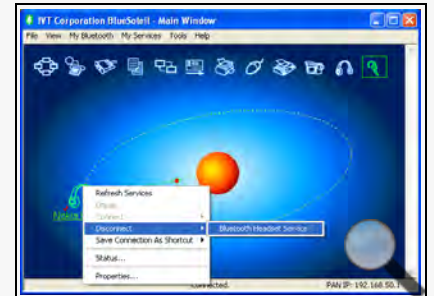


8. Note, however, the 'no entry' sign by the earpiece symbol :  . This means that the earpiece is not

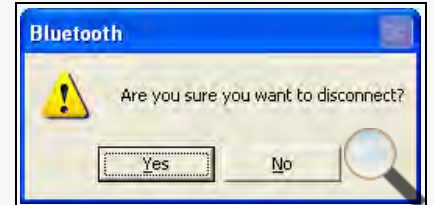
currently connected - being used for sound input or output. Click on the earpiece symbol, and the headset will ring. Press the answer button on the headset, and BlueSoleil will connect to the device, and the PsiXpda will route all sound

through the headset. The BlueSoleil tray icon will turn green (  ), indicating that it is connected to a device.

9. Once you've finished using the headset, right click on its picture in orbit around the PsiXpda, and click 'Disconnect'.




10. Click 'Yes'.



## SMS

With the PsiXpda's built-in modem, you can send and receive voice calls and SMS texts with the help of the Mobile Partner

application (  ). As with the Wi-Fi/Bluetooth device, the modem must be enabled before use with Fn-G.

Note : In order to receive calls, Mobile Partner must be running. If Mobile Partner is not running, then whenever anyone attempts to call you, they will get the same response as they would if your mobile phone were switched off. SMS texts will, as with a normal mobile phone, be collected from your mobile service provider the next time Mobile Partner is started.

## Using Mobile Partner to send and receive SMS texts

Before you begin, you will need

- An account with a mobile service provider, and corresponding to this account,
- A miniature (25mm x 15mm x 0.76mm) SIM card.

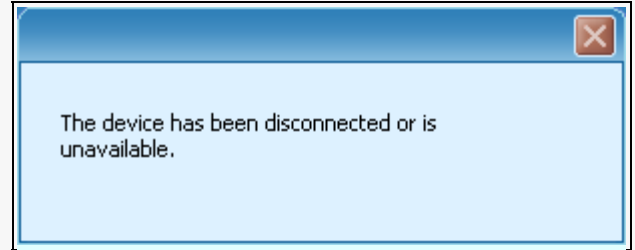
The PIN associated with the SIM (if one has been created).

## Starting Mobile Partner

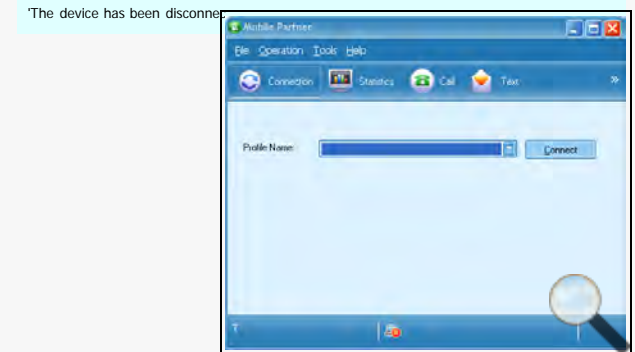
1. Double-click on the Mobile Partner shortcut (  ) on the desktop, or use the Start Menu (**Start Menu >**

**All Programs > Mobile Partner > Mobile Partner**).

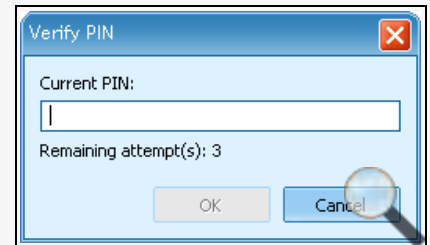
2. If you see the following message flash up, or the main Mobile Partner window has the **No data connection** icon in the blue status bar at the bottom, then the modem is currently disabled. Close Mobile Partner, press **Fn-G** and wait for the chime indicating that the modem has been enabled, and then restart Mobile Partner as described in the previous step.



3. Click **Connect**.



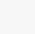
4. You might now be asked to enter the PIN associated with your SIM card. Type it into the box, and press Enter or click **OK** (the OK button will appear when you have entered 4 digits).

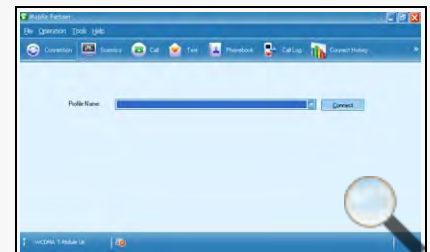


5. If you have entered the PIN correctly, Mobile Partner will now connect to your mobile provider. In this example image, Mobile Partner has a '2-bar' connection to the mobile service provider.

At this stage, Mobile Partner will collect any SMS messages waiting for you. We'll discuss how to view and reply to those in a subsequent section.

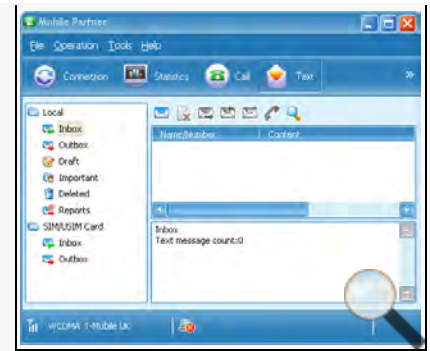


6. From here you can use the three main features of **Call**, **Text** and **Phonebook**. The window has been maximised to show more of the icons - you can use the double-chevron (  ) to access other features.



## Sending a text

1. Click on the **Text icon** (  ) to switch to the text view.



2. Just underneath the main icon bar, you'll see a group of seven new icons (



). You can hover over any of these for an

explanation, but they are, from left to right :

New

Create a new text message

Delete

Delete a text message you've received

Send

Send a new, or resend an old, text message

Reply

Reply to a text message you've received

Forward

Forward a text message onto someone else

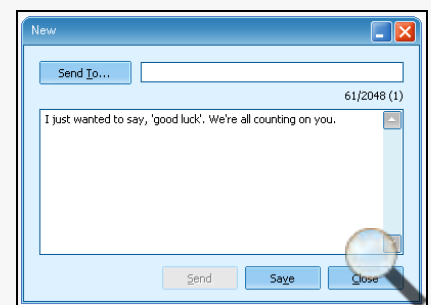
Call

Call the sender of a text message

Search

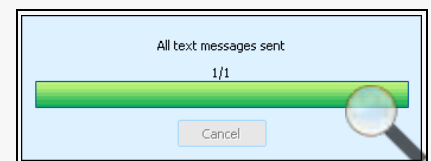
Search through the content of text messages you've sent and received.

3. Enter the number you wish to send the text to, or select the number (or numbers) from the phonebook via the **Send To...** button.




4. You can either **Send** this message immediately, or **Save** it for later use.

5. If all goes well, you should see the window declaring all messages have been sent.

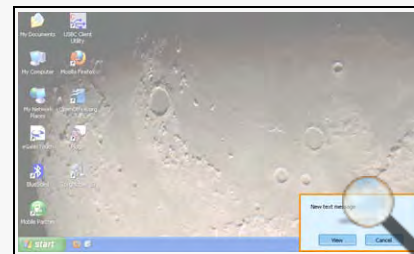


## Receiving a text

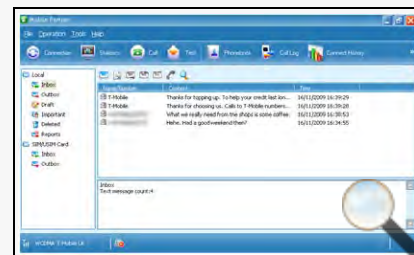
While MobilePartner is running (check the system tray for its icon (  )), it will alert you whenever you receive a text

message by ringing, and popping up an alert window in the bottom-right corner of the desktop.

1. The alert window will display the name of the person sending you the message, or, if they are not in your phonebook, their phone number. Click on **View** to view and respond to the message.



2. From here, you can see the summaries of the text messages, and read, reply to or delete them with the icons described in the previous section.



## Appendices

### Keyboard symbols

#### PsiXpda symbols

Key(s)	Effect
Fn G	Enable/disable 3G system
Fn I	Decrease volume
Fn O	Increase volume
Fn P	Mute ( <i>Windows only</i> )
Fn Q	Enable/disable keyboard backlight
Fn R	Standby
Fn T	VGA switch Requires optional Dock
Fn U	Increase LCD brightness
Fn W	Enable/disable Wi-Fi & Bluetooth system
Fn Y	Decrease LCD brightness
(▲)	Reserved for future development

#### Extended keyboard symbols

Key combination	Effect
Fn Del	Insert

Fn ◀	Home
Fn ▲	Page Up
Fn	End
Fn ▼	Page Down
Fn 1	F1
Fn 2	F2
Fn 3	F3
Fn 4	F4
Fn 5	F5
Fn 6	F6
Fn 7	F7
Fn 8	F8
Fn 9	F9
Fn 0	F10

## UK Mobile Service Provider 3G details

Where the APN is *Dynamic*, click the **Dynamic** button, and leave the **APN** box empty.

Service Provider	Access number	APN	Username	Password
O2 Pay & Go	*99#	<i>Dynamic</i>	mobileweb	
Orange	*99#	orangeinternet	Orange	Multimedia
Three	*99#	three.co.uk		
Virgin	*99#	goto.virginmobile.uk		
Vodafone Pay As You Go	*99#	pp.vodafone.co.uk		

## Support for installed applications

Firefox - <http://support.mozilla.com/en-US/kb/>

Open Office - <http://support.openoffice.org/>


Pidgin - <http://pidgin.im/cgi-bin/mailman/listinfo/support> and a more user-friendly interface at <http://old.nabble.com/Pidgin-Support-List-f26970.html>

## Frequently Asked Questions

# Windows

## How do I right-click with the stylus?

Tap-and-hold with the stylus. By default, you need to hold the stylus pressed to the screen for 1000ms (ie, 1 second), but you can configure this using the eGalaxTouch TouchMon application.

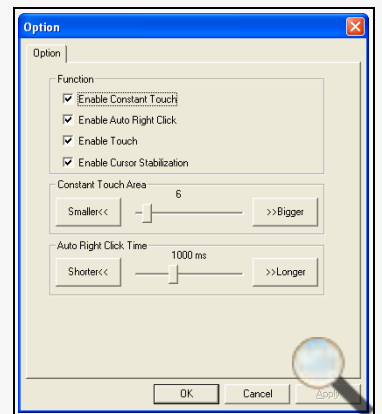
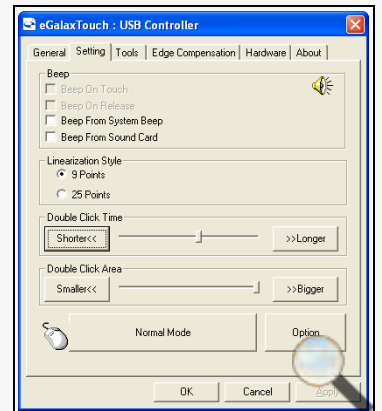
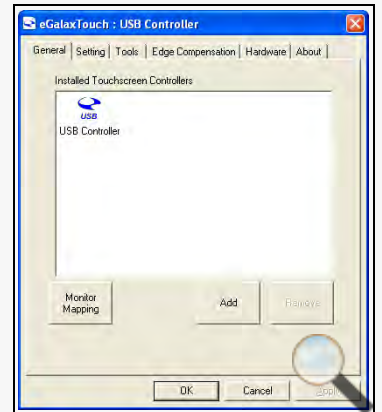
1. Double-click on the TouchMon icon (  ) in the system tray. This will bring up the main configuration window.

2. Click on **Setting**.

3. Click on the **Option** button.

4. In the section **Auto Right Click Time**, drag the slider left (right-clicks register after a briefer period) or right (longer period) until you arrive at the time you want. Click **OK**.

5. You're now back at the Setting window. Click **OK** again.



## Troubleshooting

### General

## The power button does not activate the PsiXpda


Please check the power LED. If this is off, power is not available to the PsiXpda.

- If the power LED is Off : If it is not connected to AC, the battery could be too low to start up. Connect to AC to start charging the battery.
- If the power LED is Off : If it is connected to AC, please check that the adaptor is not damaged, is connected correctly, and is switched on.
- If the power LED is flashing : The PsiXpda is in Standby mode. Briefly pressing the power button again will turn it on.

## The touch pad doesn't work

Connecting a USB mouse will disable the built-in touchpad. If a USB mouse is connected, shutdown the PsiXpda, remove the mouse, and restart.

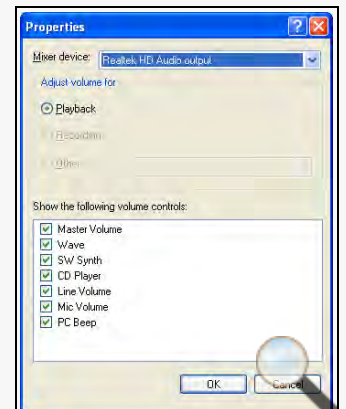
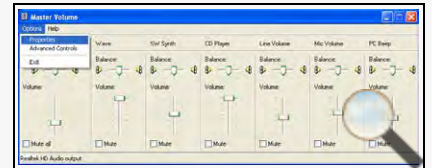
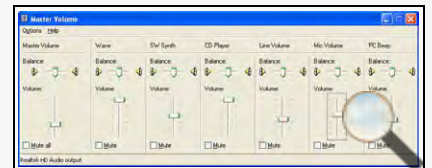
## The microphone doesn't work, or is too quiet

- If you are using an external microphone, please ensure that it is plugged in securely, and switched on.
- If you are using the internal microphone, check to see if the sound system is disabled (  in the system tray), and if so, press **Fn-P** to re-enable it.
- Check the volume levels.

- Double-click on the volume-control icon (  ) in the system tray.

- In the *Master Volume* window, ensure that in the column 'Mic Volume', the *Mute* box is unticked, and the volume slider is high. In the 'Line Volume' column, tick the *Mute* box - the PsiXpda doesn't have a line in.


- If you do not see a column labelled 'Mic Volume', click on the *Options* menu and select *Properties*, tick the box labelled *Mic Volume*, then click *OK*, and go to the previous step.



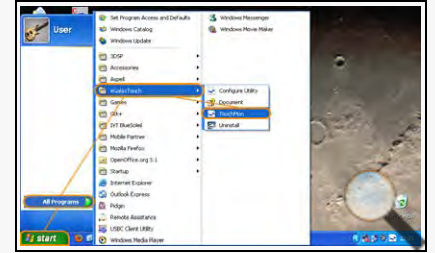
## No sound

External speakers/headphones/headsets disable the internal speaker. In order to use the internal speaker, remove (or disconnect, in the case of a Bluetooth device) the speakers. You should not need to restart for this change to take effect.

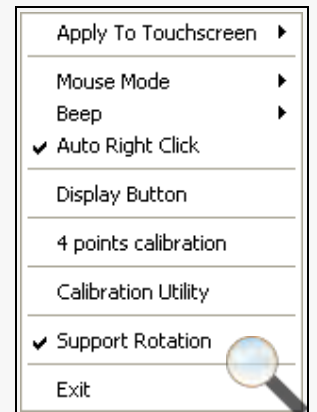
## When I rotate the screen, the touchscreen puts the pointer in the wrong place

Confirm that the eGalaxTouch software is running by checking the system tray (  ). If not, run it either by double-clicking its shortcut icon (

 ) on your desktop, or via the Start Menu **Start -> All Programs -> eGalaxTouch -> TouchMon.**



If the problem persists, right-click on the eGalax TouchMon icon to open the configuration menu, and ensure that **Support Rotation** is ticked.



## There is no picture, or the picture quality is poor, from the built-in camera

If more than one program is accessing the camera, this will reduce the picture quality. To ensure the best results, only use one program at a time.

## The keyboard doesn't work

An external USB keyboard plugged into the PsiXpda will disable the built-in one. If you wish to use the internal keyboard, unplug any external ones. You may need to reboot in order for your operating system to recognise that the keyboard has changed.

## A window is too large for the screen

### I can't see all the buttons in a window

This is an unfortunate side-effect of the small screen of the PsiXpda - some software will present you with a window that is too large for the screen, and you won't be able to click on certain buttons. However, there are a few workarounds :

- Try dragging the top of the window offscreen. Click on the bottom of the window title bar, and drag the entire window upwards, so the title bar now lies partially off the top of the screen.
- You can temporarily rotate the screen to a portrait orientation. See the [screen section](#) for information on how to do this.
- You can temporarily change the resolution of the screen to a higher resolution (ie, everything onscreen will appear smaller). To do this,



1. Open the **Display Settings** window by either right-clicking on the graphics drivers tray icon, or right-clicking the desktop background. Click on the **Display Settings** tab.



2. In the **Screen resolution** section, choose **1024 x 768** and then click **OK**.



3. Once you have dealt with the intransigent window, you can return your resolution to **800 x 480** using the same method.

- You can use available **keyboard shortcuts**. Most buttons (such as **OK** or **Cancel**) can also be activated by pressing keys. Some common ones are :

Button	Possible shortcut
OK	Alt-O
Cancel	Alt-C, or Escape
Finish	Alt-F
Next	Alt-N
Back	Alt-B

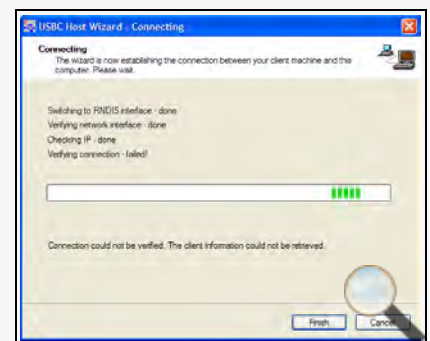
## Windows

### Intel USB Client

#### 'Connection could not be verified'

When you try to set up a connection between your desktop/laptop and your PsiXpda, you get the error 'Connection could not be verified. The client information could not be retrieved'.

This is because the PsiXpda client is currently operating in MSD mode. It should only be in this mode when installing the utilities on a host computer. To resolve it, see the penultimate step [here](#).



### I don't see any network indicators in the system tray

You can configure which networks display their status in the system tray in the **Network Connections** section of the

Control Panel.

## Disaster recovery (Windows)

If disaster occurs, and you are unable to boot into Windows at all (including [Safe Mode](#)), you may be able to restore your PsiXpda to the same state it was in when it left our factory.

*Note : This will destroy any data you have stored on your machine. If you are unable to backup this data, it will be lost permanently. If there is valuable data that you wish to rescue, consider sending it back to us instead.*

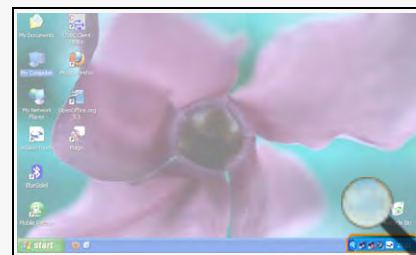
1. Reboot the machine, either by switching it off and then on, or by using the operating system to restart.
2. After the PsiX screen flashed up, press and hold F8 (ie, [Fn-8](#)). You may need to hold Fn and repeatedly tap 8.
3. You'll see a menu with 2 options. Select **Recovery partition**. The PsiXpda will now boot into the recovery partition and begin the recovery process.
4. Be sure to read each prompt you are presented with carefully before answering.

## Glossary

### Terms

- **System Tray**

The System Tray sits at the bottom-right of your desktop (assuming you have your taskbar in the normal position). It contains icons that indicate system status and/or applications that are running in the background.



### Icons



BlueSoleil - Connected



BlueSoleil - No paired devices



BlueSoleil - No connected devices



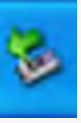
Volume control - Speakers disabled with [Fn-P](#)



eGalaxTouch TouchMon - Controls the use of the stylus as a pointing device



MobilePartner - Allows you to send and receive voice calls and SMS messages



'Safely Remove Hardware' - Click on this before removing any attached USB devices, to avoid data loss.



Intel's graphics drivers - Controls the orientation, resolution, colour depth, and frequency of the display.